

11. COMMENTS: G.C. TO COMPLY:
- TENANTS ARE PROHIBITED FROM ALLOWING MUSIC OR OTHER SOUNDS TO DISRUPT FROM THEIR SPACE INTO THE MALL COMMON AREA OR TO ADJACENT TENANT SPACE. TENANTS WHO GENERATE SOUND LEVELS EXCEEDING 40 DECIBELS ARE REQUIRED TO INSULATE THE DEMISING WALL AND CEILING AGAINST SOUND TRANSMISSION.
 - SPEAKERS MAY NOT BE LOCATED WITHIN 8' OF A STOREFRONT OR WITHIN 12" OF THE DEMISING WALL.
 - ACCESS PANELS IN CEILING MUST BE LOCATED TO PROVIDE ACCESS TO LANDLORD'S MECHANICAL EQUIPMENT PER LOCAL GENERAL ORDINANCE AUTHORITY.
 - SUPPORT WIRES FOR LAY-IN CEILING GRID MUST NOT BE CONNECTED TO ANY OF THE LANDLORD'S MECHANICAL, ELECTRICAL, PLUMBING OR FIRE PROTECTION PIPING OR EQUIPMENT.
 - TENANT CEILING HEIGHT MAY BE LIMITED BY STRUCTURAL OR MECHANICAL OBSTRUCTIONS. G.C. TO FIELD VERIFY CLEAR HEIGHTS PRIOR TO WORK START.
 - WOOD BLOCKING, DECKING AND FRAMING IS ALLOWED ONLY BELOW THE CEILING LINE AND ONLY IF IT IS MILL STAMPED FIRE RETARDANT.
 - SPRINKLER HEADS AT GYPSUM BOARD CEILING MUST BE FULLY RECESSED AND COVERED WITH METAL PLATES FINISHED TO MATCH ADJACENT SURFACE. CENTER SPRINKLER HEADS IN CEILING TILES WHERE APPLICABLE.
 - G.C. TO VERIFY THAT EXIT SIGN AND EMERGENCY LIGHTING ARE NOT VISIBLE FROM THE MALL VIEW.

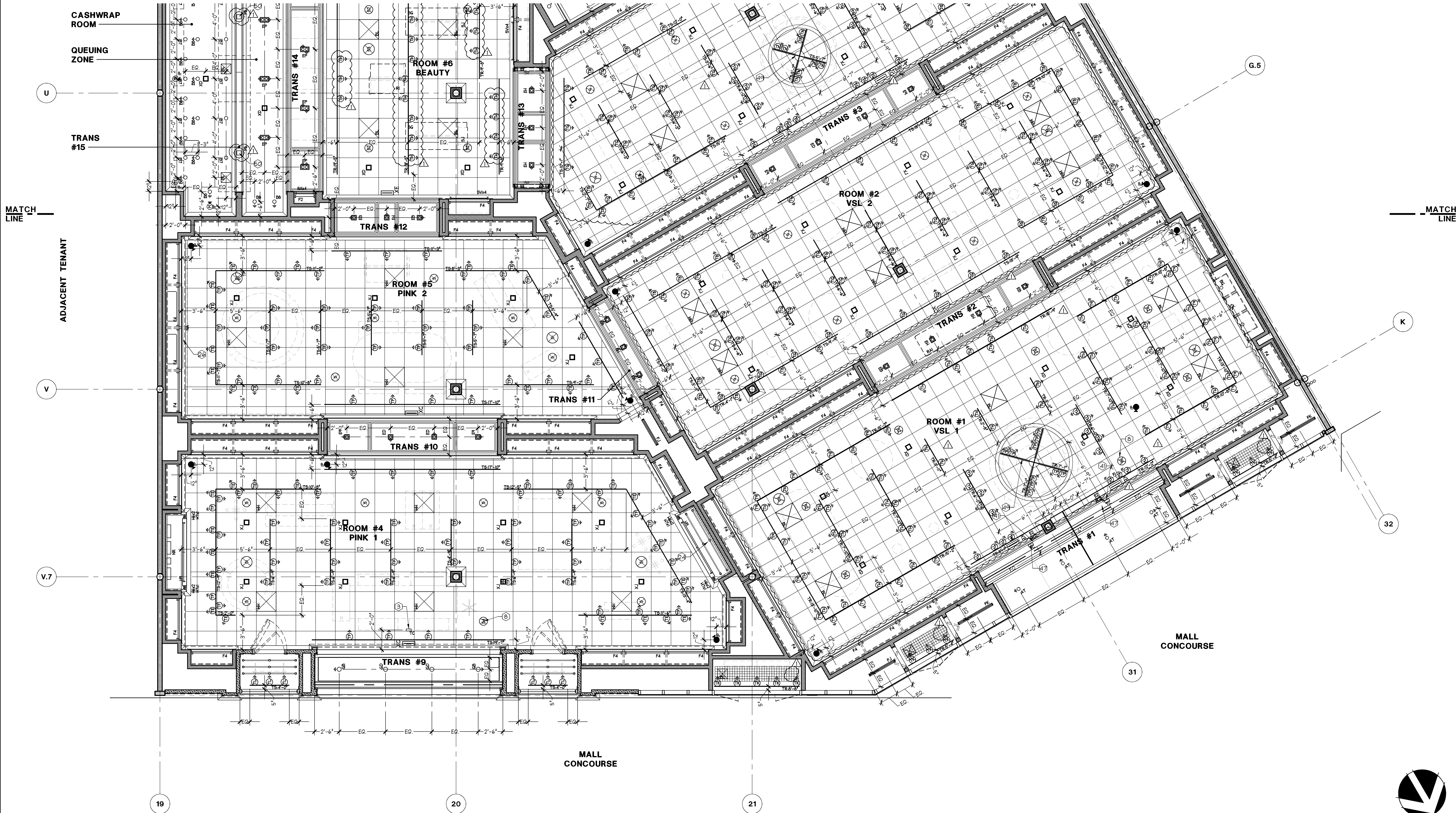
- GENERAL
- 1 SECURITY SYSTEM MONITOR, REFER TO DETAIL L/A10.01 FOR MOUNTING
 - 2 LIGHT FIXTURE CENTERED IN CEILING
 - 3 TRAFFIC COUNTER WITH WHITE FINISH INSTALLED AT CEILING
 - 4 WALL SCONCE, REFER TO INTERIOR ELEVATIONS FOR MOUNTING HEIGHT AND LOCATION. REFER TO ELEC DRAWINGS FOR POWER REQUIREMENTS.
 - 5 NOT USED
 - 6 OFFICE TASK LIGHTING PROVIDED w/ OFFICE FURNITURE PACKAGE. REFER TO ELEC DWGS. FOR REQUIREMENTS.
 - 7 SUSPENDED LIGHT FIXTURE ON ADJUSTABLE CABLE, BOTTOM TO BE SET @ 8'-0" A.F.F. NOTE: A MINIMUM GAP OF 9" MUST BE MAINTAINED BETWEEN FIXTURE AND CEILING.
 - 8 FAUX SPEAKER SCREEN FOR TRANSFER OF SENSORMATIC ALARM SOUND. REFER TO SCHEDULE G/A00.04 FOR FINISH.
 - PINK
 - 9 LED LIGHTING INSTALLED INSIDE OF PINK SHEETMETAL CENTER, REFER TO DETAIL S/A00.04 FOR REQUIREMENTS. REFER TO ELECTRICAL DRAWINGS FOR POWER REQUIREMENTS.
 - 10 PINK FITTING ROOM PENDANT LIGHT FIXTURE. D.O. FIXTURE TO BE HUNG AT 12'-0" A.F.F.
 - 11 PINK CASHWRAP PENDANT LIGHT FIXTURE. D.O. FIXTURE TO BE HUNG AT 12'-0" A.F.F.
 - 12 BUILT LETTER PINK SIGNAGE AT BACK WALL OF FOCAL. REFER TO DETAIL S/A10.05 FOR DETAILS. REFER TO ELECTRICAL DRAWINGS FOR POWER REQUIREMENTS.
 - VSL
 - 13 LED LIGHTING IN PINK ARMED FIXTURE. REFER TO DETAIL L/A10.01 AND ELECTRICAL DRAWINGS FOR POWER REQUIREMENTS.
 - 14 WALL MOUNTED NEON SIGN, REFER TO ELECTRICAL DRAWINGS FOR POWER REQUIREMENTS. REFER TO DETAIL K2/A10.01 AND INTERIOR ELEVATIONS FOR MOUNTING AND ACCESS REQUIREMENTS.
 - 15 PINK FENDER ROOM PENDANT LIGHT FIXTURE. D.O. FIXTURE TO BE HUNG AT 12'-0" A.F.F.
 - 16 SPARKLE LETTER PINK SIGNAGE AT BACK WALL OF FOCAL. REFER TO DETAIL S/A10.05 FOR DETAILS. REFER TO ELECTRICAL DRAWINGS FOR POWER REQUIREMENTS.
 - VSL
 - 17 TRAFFIC COUNTER WITH BLACK FINISH INSTALLED AT UNDERSIDE OF SOFFIT. SEE DETAIL J/A08.15.
 - 18 BEAUTY SHELF LIGHTING - SEE DETAIL C/A11.03
 - 19 NOT USED
 - 20 NOT USED
 - 21 NOT USED
 - 22 DIRECTIONAL LIGHT FIXTURE RECESSED IN VERTICAL SURFACE. REFER TO ELEVATION FOR MORE INFORMATION.
 - 23 NOT USED

- 24 TRACK LIGHTING ATTACHED TO DRUM SHADE FIXTURE ON SITE. REFER TO DETAIL D/A11.01.
- 25 VSS CASHWRAP TABLE LAMP. REFER TO ELEC DRAWINGS FOR POWER.

NOTE: ALL SECURITY CAMERAS AND DOMES ARE RECESSED FIXTURE WHICH ARE PROVIDED WITH WHITE TRIM RINGS. G.C. TO PAINT THE RING TO MATCH THE CEILING FINISH WHEN LOCATED IN A DARK CEILING ONLY.

REFER TO SHEET A00.04 FOR GENERAL NOTES AND CEILING LEGEND
REFER TO SHEET E04.01 FOR LIGHTING SCHEDULE

REFLECTED LIGHTING PLAN KEYNOTES



REFLECTED LIGHTING PLAN

1/4" = 1'-0"

A

SHREMSHOCK
Shremshock Architects, Inc.
2020 W. Campus Rd. Suite 150 New Albany, OH 43054
T: 614.645.4500 F: 614.645.4501 S: shremshock.com
Timothy J. Shremshock, Architect | 113685

Lbrands
STORE DESIGN & CONSTRUCTION
Three Limited Parkway • Columbus, Ohio 43230
Telephone: 614.415.7000 • Fax: 614.415.7349

THESE DRAWINGS AND SPECIFICATIONS ARE THE PROPERTY OF LBRANDS DESIGN & CONSTRUCTION, INC. (LBRANDS). NO PART OF THESE DRAWINGS OR SPECIFICATIONS SHALL BE REPRODUCED OR TRANSMITTED IN ANY FORM OR BY ANY MEANS, ELECTRONIC OR MECHANICAL, INCLUDING PHOTOCOPYING, RECORDING, OR BY ANY INFORMATION STORAGE AND RETRIEVAL SYSTEM, WITHOUT THE WRITTEN PERMISSION OF LBRANDS. ANY UNAUTHORIZED USE OF THESE DRAWINGS OR SPECIFICATIONS SHALL BE AT THE USER'S SOLE RISK AND WITHOUT LIABILITY TO LBRANDS. LBRANDS ASSUMES NO LIABILITY FOR ANY DAMAGE OR LOSS OF PROFITS, BUSINESS, OR REPUTATION, OR FOR ANY SPECIAL, CONSEQUENTIAL, OR INCIDENTAL DAMAGES, INCLUDING ATTORNEY'S FEES, ARISING OUT OF OR IN CONNECTION WITH THESE DRAWINGS OR SPECIFICATIONS. THESE DRAWINGS AND SPECIFICATIONS ARE FOR INFORMATION ONLY AND ARE NOT TO BE USED FOR CONSTRUCTION. LBRANDS ASSUMES NO LIABILITY FOR ANY DAMAGE OR LOSS OF PROFITS, BUSINESS, OR REPUTATION, OR FOR ANY SPECIAL, CONSEQUENTIAL, OR INCIDENTAL DAMAGES, INCLUDING ATTORNEY'S FEES, ARISING OUT OF OR IN CONNECTION WITH THESE DRAWINGS OR SPECIFICATIONS.

PROJECT INFORMATION: 010500587
VICTORIA'S SECRET
NORTH POINT MALL
SPACE ALLOCATION
TUSCANY NORTH POINT CIRCLE
ALPHARETTA, GA 30022

REVISIONS:

NO.	DESCRIPTION	DATE
1	ISSUED FOR PERMIT	01/02/2015

DATE ISSUED: 09/19/14
DESIGNED BY: CN
DRAWN BY: MJN
CHECKED BY: JM/SKM

REFLECTED LIGHTING PLAN

DRAWING NUMBER: A04.01